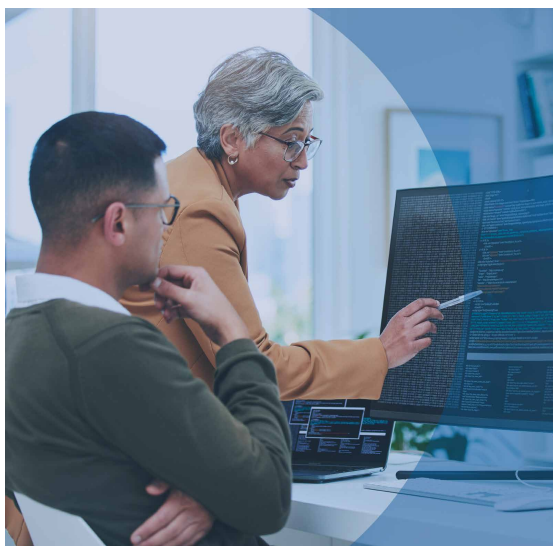


# PROFESSIONAL IT



## GENERAL INFORMATION

### OBJECTIVE

Instantly provide an overview of a candidate's profile in relation to the characteristics generally sought.

### CONTEXT

Selection or preselection

### TARGET CLIENTELE

All professional positions in the IT field

### DURATION

45 minutes

### COST

195 \$

### LANGUAGES AVAILABLE

French  
English

## PROFESSIONAL – IT REPORT

The Professional – IT report is an automatically generated document presenting a candidate's results following the administration of 2 online psychometric tests. This automated tool provides a quick overview of the evaluated individual's positioning on a series of targeted skills to support their success in a professional IT role.

## DIMENSIONS ASSESSED

- ▶ Cognitive Agility
- ▶ Relational Effectiveness
- ▶ Collaboration
- ▶ Self-Management
- ▶ Adaptability
- ▶ Professional Rigour
- ▶ Decision-Making
- ▶ Innovation Mindset
- ▶ Planning and Organizing
- ▶ Problem-Solving

## ADVANTAGES

- ▶ Complete autonomy on Interpreto's user-friendly platform for test administration and report management.
- ▶ Report generated instantly, as soon as the candidate completes their last test.
- ▶ Quick visual overview of the level of mastery of skills (Red-Yellow-Green color code).
- ▶ Match with job profile: high, partial or low.
- ▶ Examples of probing questions based on skills to be improved.
- ▶ Overview of the candidate's integration style.
- ▶ Avenues for development support.

## TESTS ADMINISTERED/TOOLS

### GENERAL APTITUDE TEST: CFIT™ (CRYSTALLIZED AND FLUID INTELLIGENCE TEST)

The CFIT provides a measure of verbal, numerical and spatial cognitive abilities. A section on non-verbal logical reasoning has been included so that the results are not affected by the candidate's language proficiency or cultural background.

The test consists of 203 multiple choice questions, divided into 5 independently timed sections for a total of approximately 30 minutes.

To learn more and get an overview of the test's characteristics, [click here](#).

\* CFIT™ – Crystallized and Fluid Intelligence Test – trademark of IRPCANADA – all rights reserved

### PERSONALITY TEST: IPLC™ (LE CORFF PERSONALITY INVENTORY)

The IPLC provides a measure of the Big Five personality traits of Openness, Conscientiousness, Extraversion, Agreeableness and Emotional Stability, each of which is broken down into two more specific facets (10 dimensions in total).

The untimed test consists of 105 statements with answer choices (degree of agreement) and is usually completed in 12 to 20 minutes.

To learn more and get an overview of the test's characteristics, [click here](#).

\* IPLC™ – Le Corff Personality Inventory – trademark of IRPCANADA – all rights reserved

## TARGET CLIENTELE

- ▶ BI/software/Cloud/Web solution architect
- ▶ Cybersecurity consultant
- ▶ Database analyst/administrator
- ▶ Data scientist
- ▶ IT Consultant
- ▶ Programmer
- ▶ Software developer
- ▶ Software/network/systems engineer